

SESSION 3: Integration of Rubber in broad Climate Change and Sustainability Policies,  
including Economic and Social Dimensions

# Sustainable Wood for a Sustainable World initiative and its relevance to the rubber and climate change agenda

Michael Brady, CIFOR, Lead, Value Chains, Finance and  
Investment

**Workshop on Climate Change and Natural Rubber Systems**

23-25 June 2020

SUSTAINABLE  
WOOD *for a*  
SUSTAINABLE  
WORLD




*Sustainable Wood for a Sustainable World (SW4SW) partners :*

#sw4sw  
#woodisgood



# Objectives

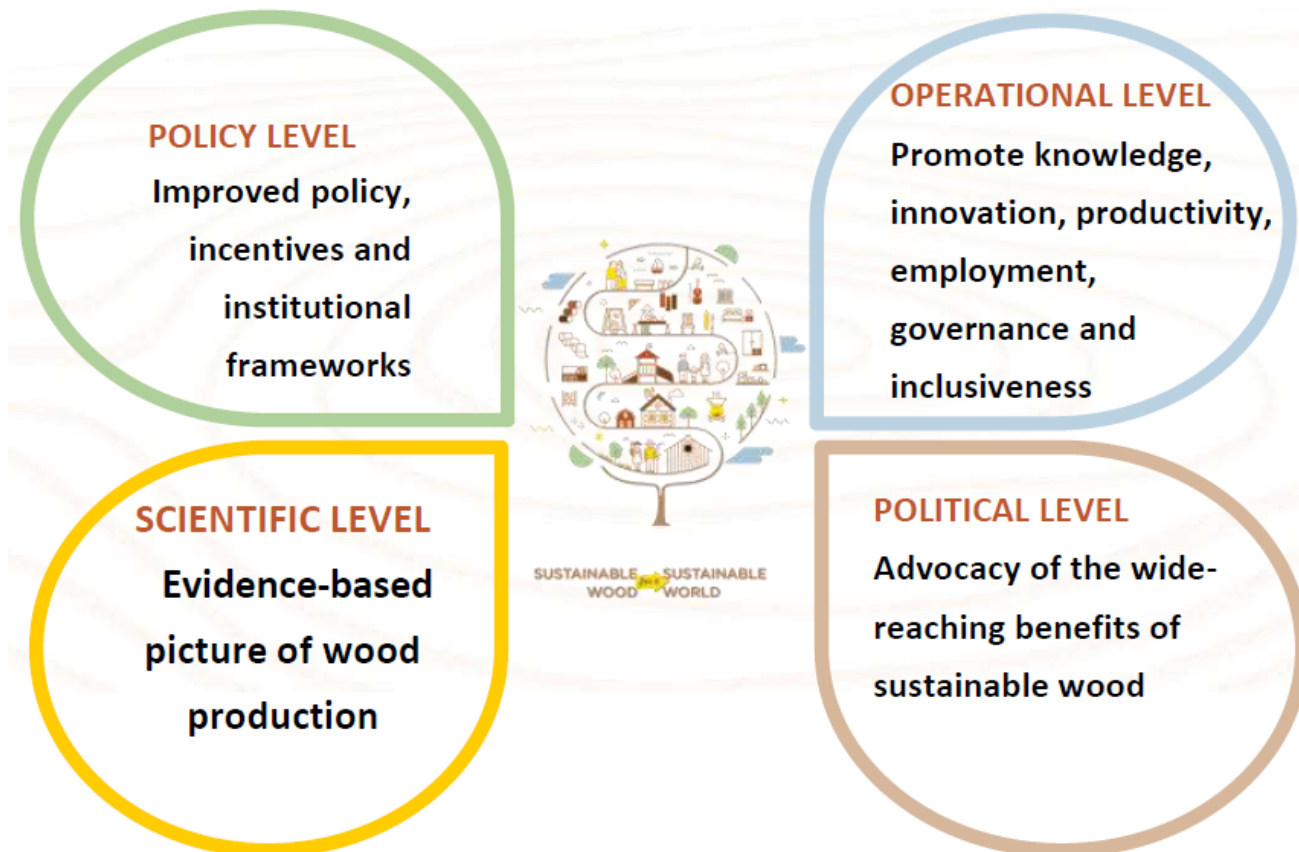
- 
- 01** Raise awareness of the availability of sustainable wood products and their wide uses and benefits;
  - 02** Dispel perception of wood production as a driver of environmental damage and inequity
  - 03** Unblock markets and finance for sustainable wood
  - 04** Build Capacity for strengthening sustainable wood value chains
  - 05** Show how, when and where wood contributes to sustainable bioeconomy

## Exploring the linkages between:

- Forest management
- Landscapes
- Value chains
- Livelihoods
- Markets
- Investments and financing mechanisms

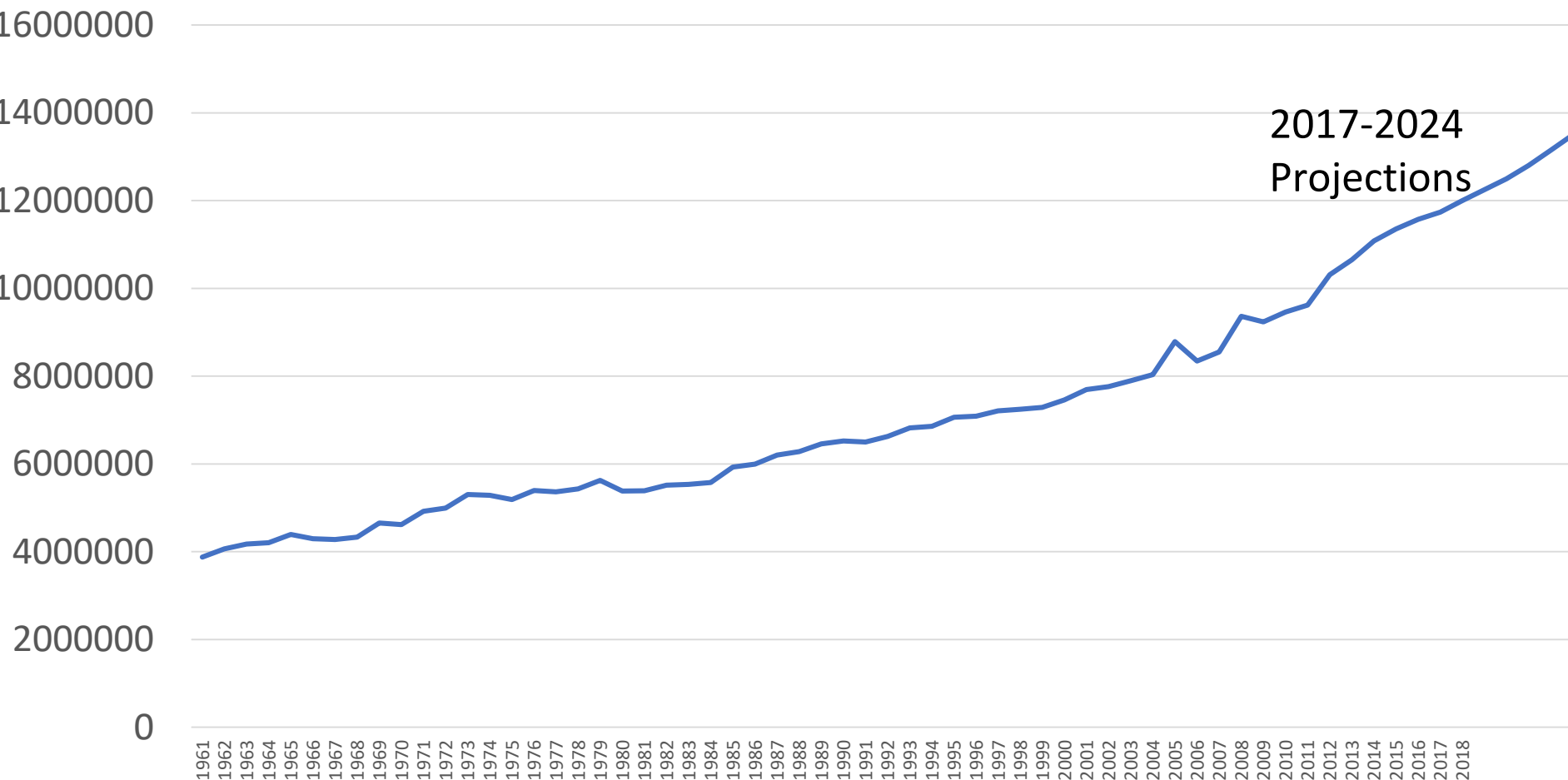
Source: FAO SW4SW 2019

# The Initiative operates at four levels:



Source: FAO SW4SW 2019

# Worldwide rubber harvested area



Opportunities to strengthen rubber in SW4SW for wood and latex

### Wood-based bioeconomy

A bioeconomy made of all biological resources derived from wood (including wood that doesn't come from forests and recycling of wood products)

### Forest-based bioeconomy

A bioeconomy made of all biological resources available in forests

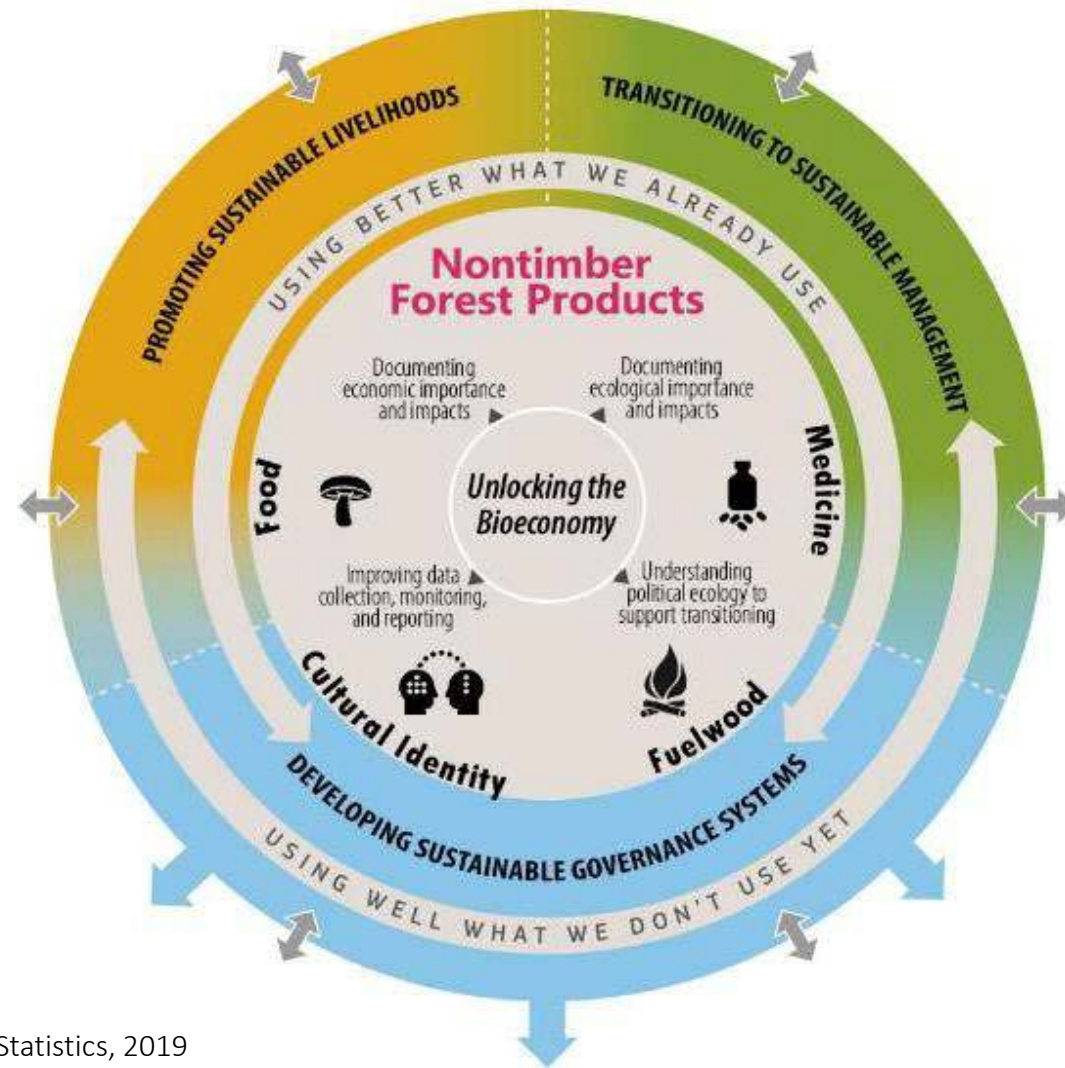


# Contribution of NWFP to the bioeconomy



# Sustainability of NWFP value chains in the bioeconomy

- Ensure **sustainability** of NWFP management, governance and contribution to people's livelihoods
- Upscale **better use** of what we already use
- Promote **future uses** of NWFP what we do don't use yet



Source: FAO Forest Products & Statistics, 2019





# COFO 25

FAO HEADQUARTERS - ROME, ITALY

A graphic design for a webinar week. On the left, there are three circular icons containing different types of leaves: a maple leaf, a simple leaf, and an oak leaf. To the right, a green arrow points towards the text. Further right, there are three red, spiky virus-like icons. The background is light green with abstract white lines.

22-25 JUNE  
**COVID-19  
FORESTRY  
WEBINAR WEEK**

**SW4SW Survey on COVID19-related impacts on forest value chains and sector responses**

<http://www.fao.org/about/meetings/cofo/covid-19-forestry-webinar-week/programme/en/>